

The

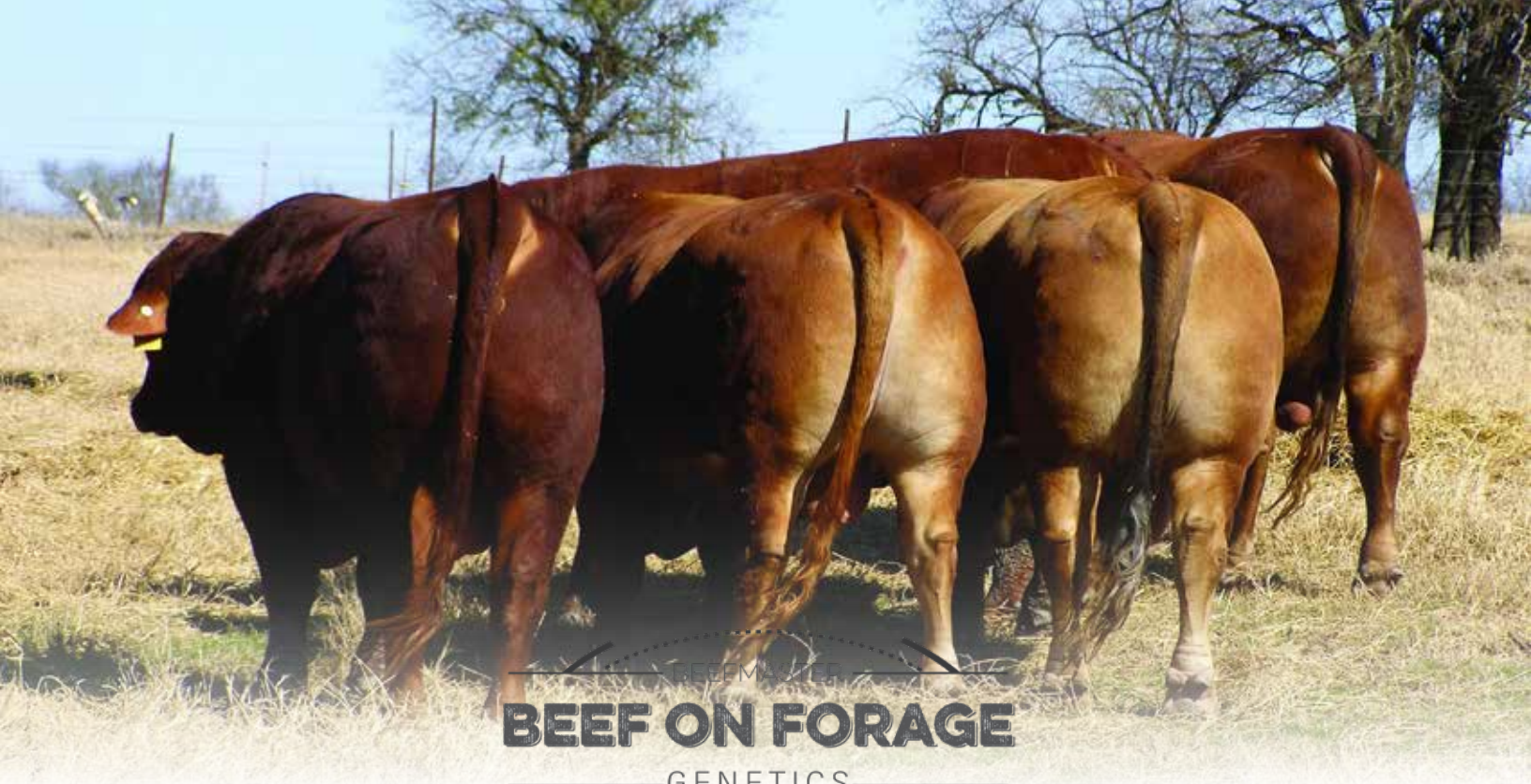
Maternal

Collection

APRIL 18, 2026

BRENHAM, TEXAS AT 11 AM

www.BeefOnForage.com



BEEFMASTER
BEEF ON FORAGE
GENETICS
B

**JOIN US AT OUR NEXT
BEEF ON FORAGE SALE:**

3RD SATURDAY IN MARCH

McALESTER, OKLAHOMA

110 BULLS, 40 REGISTERED FEMALES

3RD SATURDAY IN APRIL

BREHAM, TEXAS

75 REGISTERED FEMALES, HERD BULLS

3RD FRIDAY IN SEPTEMBER

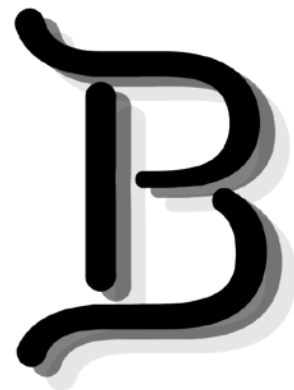
ARCADIA, FLORIDA

125 BULLS

3RD SATURDAY IN OCTOBER

BREHAM, TEXAS

125 BULLS, 40 REGISTERED FEMALES



DEREK FRENZEL

254.541.4643 | derekfrenzel@aol.com

WWW.BEEFMASTERBULLSALE.COM



4/18/26 | 11:00 AM | Washington County Fairgrounds | Brenham, TX

We are excited to host our second annual Maternal Collection - Spring Edition registered heifer sale. This will be the second time in 30 years the Beef on Forage program has hosted a Spring female sale in Texas.

The 2026 offering will feature over 60 head of Fall Bred and Open Spring born heifers from the Beef on Forage group. This will be your opportunity to join a progressive program that is dedicated to developing and growing the Beefmaster breed. Join us in Brenham, Texas on April 18, 2026 at the Washington County Fairgrounds. We will have viewing of the cattle, entertainment and dinner on Friday night at the sale facility followed by the sale starting at 11:00 am on Saturday morning.

The sale will be broadcast live on DV Auction or you can contact me to participate in our absentee buyer program.

If I can be of any assistance, please do not hesitate to call or text.

Derek Frenzel
254.541.4643
derekfrenzel@aol.com

WWW.BEEFONFORAGE.COM

Sale Schedule:

FRIDAY, APRIL 17TH
All day viewing of heifers.
5:00 pm - Social and Entertainment
6:30 pm - Dinner at sale facility
SATURDAY, APRIL 18TH
9:00 am - Breakfast and lunch tacos
11:00 am - HEIFER SALE

Hotel Accomodations:

SALE HEADQUARTERS
Best Western | (979)251-7791
Coach Light | (979)836-5657
Comfort Inn | (979)421-8100
Hampton Inn | (979)337-9898
Holiday Inn | (979)836-4590
La Quinta | (979)836-5551
Super 8 | (979)830-8885

This sale will be broadcast live on the internet.
DVAuction
Broadcasting Real-Time Auctions
Real time bidding & proxy bidding available.

Auctioneer:

Troy Robinett: (817)995-7509

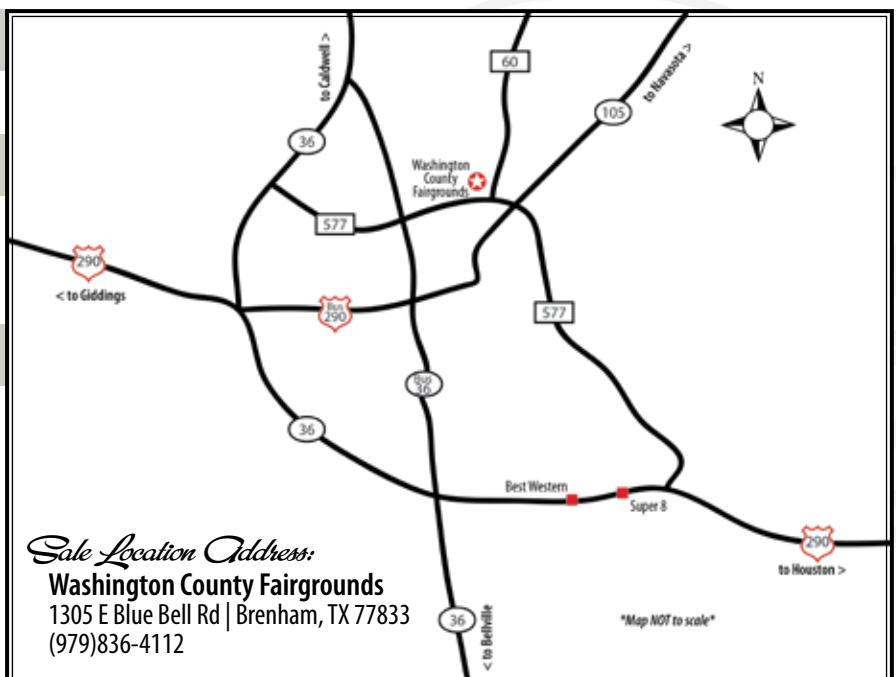
Sale Day Announcements:

We strive to have the most current information and EPDs available at the time of printing. We will have any updates available on sale day.

View Videos at:

www.BeefOnForage.com

Catalog Produced By:



Sale Location Address:
Washington County Fairgrounds
1305 E Blue Bell Rd | Brenham, TX 77833
(979)836-4112

Can't make it?

This sale will be broadcast live on the internet.

DVAuction

Broadcasting Real-Time Auctions

Real time bidding & proxy bidding available.

www.dvauction.com

Register to create an account and watch the online bidding tutorial. Apply for bidding approval online at least 24 hours prior to the auction or call for immediate approval. A DV representative will notify you once you have been approved to purchase. After the sale, contact Derek at 254.541.4643 to arrange payment.

Contact DV Auction technical support at 402.316.5460 for any problems.

The *Maternal* Collection

TOMBIGBEE FARM N36



LOT 1 POLLED

BLAU 511



LOT 2

F & M CATTLE CO 5444



LOT 4

MOCKINGBIRD HILL 4167



LOT 33 POLLED

F & M CATTLE CO 4638



LOT 34 POLLED

F & M CATTLE CO 4713



LOT 35 POLLED

»»» LOTS 1-32 SPRING OPEN HEIFERS

»»» LOTS 33-61 FALL BRED HEIFERS

SALE SCHEDULE

FRIDAY, APRIL 17TH

All day viewing of heifers

5:00 pm - Social and Entertainment

6:30 pm - Dinner at sale facility

SATURDAY, APRIL 18TH

9:00 am - Breakfast and lunch tacos

11:00 am - HEIFER SALE

www.BeefOnForage.com

The 2026 female offering brings you a great set of Spring Open Heifers as well as Fall Bred Heifers.

SPRING OPEN HEIFERS Lots 1 - 32

Starting on Page 6

FALL BRED HEIFERS Lots 33 - 61

Starting on Page 13

WS 24023



REFERENCE SIRES FOR BRED HEIFERS

ECD IS AUG. 10 - NOV. 15

AI sire is WS 24023 - C1189619

Natural service sires are

FMC 2112 - C1161946

FMC 2808 - C1171152

WS 24023 sold as Lot 2 for \$60,000 in the 2025 Beef On Forage Texas Sale.

FMC 2808



FMC 2112





TOMBIGBEE FARM

ID: N36 BBU# C1205857 POLLED 2/25/2025
 COLOR: RED SPRING OPEN HEIFER

- Polled Ledger daughter.
- Outstanding EPD spread of 30% BW, 2% WW and 2% YW
- Dam is a top donor in the Tombigbee Program.
- Performance blended genetics.

MILLER 898
LRB LEDGER 2208
 M & M CATTLE CO 0718
 CJ'S PROGRESS 1880
CJ QUEEN OF JEWELS 21114
 CJ GAME OF EMERALDS 9/19
 TANK 376
 LYSSY 103/685
 L BAR 5549
 SACKET BEEFMASTERS 604
 CJ'S GAME CHANGER 1316
 CJ'S HOPE DIAMOND 5/13
 CJ'S GAME CHANGER 1316
 *CJ'S DIAMOND EMERALD 7/13

	EXPECTED PROGENY DIFFERENCES						ULTRASOUND EPDS				INDEXES	
	CED	BW	WW	YW	MILK	SC	REA	%IMF	RIB FAT	\$T	\$M	\$FE
EPD	4.78	-0.2	53	73	9	1.47	0.39	0.11	-0.02	141.56	34.1	20.74
% RANKING	25	30	2	2	55	2	35	25	85	2	2	20
		BW	WW	YW			REA	%IMF	RIB FAT	RUMP FAT		
RATIO		117										
COMTEMP		6	1	1			1	1	1	1		
ADJ. TRAIT		77	488	921			9.39	3.82	0.3	0.4		

Open



BLAU RANCH

ID: 511 BBU# C1197365 DE-HORNED 1/28/2025
 COLOR: RED MOT UL SPRING OPEN HEIFER

- Massive bone.
- Performance genetics top and bottom.
- One of the top programs in the BOF group.
- Dam is a 6 year old FMC 7108 daughter going back to Trademark.

*DOUBLE L 7008
FMC 9901
 FRENZEL 6319
 FMC 7108
ML012
 ML821
 ** *L BAR 5502
 L BAR 4431
 LYSSY 112/458
 *FRENZEL 990
 CHRK RASIN' CAIN 1780X
 F & M CATTLE CO 5346
 TRADEMARK 5318
 ML529

	EXPECTED PROGENY DIFFERENCES						ULTRASOUND EPDS				INDEXES	
	CED	BW	WW	YW	MILK	SC	REA	%IMF	RIB FAT	\$T	\$M	\$FE
EPD	2.3	0.8	30	45	12	0.47	0.27	0.08	-0.03	92.91	17.67	17.73
% RANKING	85	70	45	35	10	55	50	30	50	35	55	35
		BW	WW	YW			REA	%IMF	RIB FAT	RUMP FAT		
RATIO			96									
COMTEMP		1	2	1			1	1	1	1		
ADJ. TRAIT			630	872			10.61	3.01	0.32	0.48		

Open



MOSS BEEFMASTERS

ID: 502 BBU# C1201893 POLLED 1/12/2025
 COLOR: RED SPRING OPEN HEIFER

- Super fancy polled heifer.
- Sire was number 3 ranked bull in Oklahoma 2022.
- Very attractive bull maker.
- Heavy foundation genetics.

TRANUM 717
FMC 0706
 F & M CATTLE CO 3335
 FOUNDATION BEEFMASTERS 5021
PINE SPRINGS RANCH 147
 BUSTER 921
 KID ROCK 4218
 *BILL TRANUM 331
 RACHAEL'S RANCH 939
 KING 720
 LASATER BEEFMASTER 3705
 LASATER BEEFMASTER 3912
 MAREK 233
 BUSTER 120

	EXPECTED PROGENY DIFFERENCES						ULTRASOUND EPDS				INDEXES	
	CED	BW	WW	YW	MILK	SC	REA	%IMF	RIB FAT	\$T	\$M	\$FE
EPD	4.04	-0.2	20	27	10	0.19	0.3	-0.1	-0.03	59.14	14.78	13.24
% RANKING	40	30	80	80	35	80	45	80	50	80	70	65
		BW	WW	YW			REA	%IMF	RIB FAT	RUMP FAT		
RATIO		99	100									
COMTEMP		2	2	1			1	1	1	1		
ADJ. TRAIT		81	621	746			8.49	3.33	0.24	0.44		

Open



F & M CATTLE CO.

ID: 5444 BBU# C1199707 DE-HORNED 3/14/2025
 COLOR: RED SPRING OPEN HEIFER

- Sold growth EPDs.
- Super deep sided feminine female.
- Double L granddaughter.
- Another FMC 7108 daughter.

FMC 7108

CHRK RASIN' CAIN 1780X
 F & M CATTLE CO 5346
 *DOUBLE L 7008

FMC 921

F & M CATTLE CO 2436

CHRK GENESIS 1500T
 CHANNAROCK FARM 720/0
 WHISKEY RIVER 220
 FOUNDATION BEEFMASTERS L57
 ** *L BAR 5502
 L BAR 4431
 HICKORY DICKORY DOC 1473/7
 M & M CATTLE CO 9039

	EXPECTED PROGENY DIFFERENCES						ULTRASOUND EPDS				INDEXES	
	CED	BW	WW	YW	MILK	SC	REA	%IMF	RIB FAT	\$T	\$M	\$FE
EPD	2.52	0.1	29	47	8	0.75	0.41	-0.01	-0.02	95.62	13.17	15.88
% RANKING	80	40	45	30	75	30	30	55	85	30	75	45
	BW	WW	YW	REA	%IMF	RIB FAT	RUMP FAT					
RATIO	108	95	104	90	68	108	120					
COMTEMP	22	22	3	3	3	3	3					
ADJ. TRAIT	81	622	941	9.99	2.37	0.43	0.79					

Open



LARRY LAIRMORE

ID: 547 BBU# C1204864 POLLED 1/22/2025
 COLOR: RED SPRING OPEN HEIFER

- Polled Double 2 Step daughter.
- 4 Pacesetters in pedigree.
- Multiple Lairmore bred genetics in pedigree.
- Big individual weaning ratio of 108% and top 20% WW and 10% YW.

FMC DOUBLE TWO STEP 2913

ROCKIN' TWO STEP 7403
 FRENZEL 8239
 LL MR PD 501

LL MISS PD 148

*LL MISS COLORADO 019

FRENZEL ROCKING F BAR 4906
 *FRENZEL 429
 LL MR DOUBLE L 421
 FRENZEL 4204
 *DOUBLE L 7008
 BUSTER 033
 *FOUNDATION BEEFMASTERS 5222
 MISS YELLER 714

	EXPECTED PROGENY DIFFERENCES						ULTRASOUND EPDS				INDEXES	
	CED	BW	WW	YW	MILK	SC	REA	%IMF	RIB FAT	\$T	\$M	\$FE
EPD	1.69	1.3	38	59	11	0.7	0.37	-0.16	-0.04	113.77	20.33	29.57
% RANKING	95	85	20	10	20	35	35	95	15	15	40	2
	BW	WW	YW	REA	%IMF	RIB FAT	RUMP FAT					
RATIO	99	108	97	89	106	89	106					
COMTEMP	17	15	3	3	3	3	3					
ADJ. TRAIT	81	610	836	8.43	3.05	0.31	0.55					

Open



MAGEE BEEFMASTERS

ID: 520 BBU# C1199768 DE-HORNED 3/10/2025
 COLOR: RED SPRING OPEN HEIFER

- Sire was top 10 Texas bull.
- 10% WW , 15% YW and 15% REA.
- Strong foundation presence in pedigree.

ENSOR ZEUS 111

ENSOR 882
 M & M CATTLE CO 9011
 DBL TT 990

MAGEE 207

MAGEE 016

TANK 376
 *MISTY RED 201
 L BAR 5549
 FOUNDATION BEEFMASTERS 308
 LL MASTER LINK 560
 TT CASSANO 581
 PINE SPRINGS 802
 MAGEE 838

	EXPECTED PROGENY DIFFERENCES						ULTRASOUND EPDS				INDEXES	
	CED	BW	WW	YW	MILK	SC	REA	%IMF	RIB FAT	\$T	\$M	\$FE
EPD	-0.73	2.3	38	59	12	0.71	0.62	-0.05	-0.03	114.78	19.02	20.25
% RANKING	>95	>95	20	10	10	35	15	65	50	15	45	20
	BW	WW	YW	REA	%IMF	RIB FAT	RUMP FAT					
RATIO	78	108										
COMTEMP	8	7	1	1	1	1	1					
ADJ. TRAIT	90	570	836	9.46	2.22	0.26	0.36					

Open



TOMBIGBEE FARM

ID: N12 BBU# C1201437 DE-HORNED 1/13/2025
 COLOR: DARK RED SPRING OPEN HEIFER

- Enforcer daughter.
- Modest Birth Weight EPD.
- Top 5% WW EPD with a 109% individual ratio.

VFF NEW HORIZON 19/3
 VFF ENFORCER 306E
 VFF MS ADV 77-4
 LL MR PD 501
LL MISS PD 093
 *LASATER 6420
 ** MAVERICK 17/557
 VFF HONEY GIRL 43/8
 VFF MR 16/2
 CAIN 009Y
 *DOUBLE L 7008
 BUSTER 033
 *
 LASATER BEEFMASTER 3279

	EXPECTED PROGENY DIFFERENCES						ULTRASOUND EPDS				INDEXES	
	CED	BW	WW	YW	MILK	SC	REA	%IMF	RIB FAT	\$T	\$M	\$FE
EPD	3.98	0.3	47	70	10	1.16	0.41	0.15	-0.02	136.08	27.17	32.81
% RANKING	40	50	5	3	35	10	30	20	85	3	15	1
	BW	WW	YW	REA	%IMF	RIB FAT	RUMP FAT					
RATIO	97	109	91	74	92	80	122					
COMTEMP	18	10	5	5	5	5	5					
ADJ. TRAIT	70	603	848	8.44	3.63	0.3	0.7					

Open



LARRY LAIRMORE

ID: 541 BBU# C1204859 DE-HORNED 1/7/2025
 COLOR: RED SPRING OPEN HEIFER

- First Manzo daughter to sell.
- Sire was high selling bull in Oklahoma in 2023.
- Maternal greatness with 4 Pacesetters in pedigree.

MILLER 8113
FRENZEL MANZO 1708
 FRENZEL 5827
 LYSSY'S KRYPTONITE 14/680
LL MISS KRYPTONITE 068
 *LL MISS DOUBLE L 632
 LL STRETCH 400
 MILLER 537
 LYSSY 112/458
 *FRENZEL 429
 RED RYDER 8035
 LYSSY & SONS 11/952
 *DOUBLE L 7008
 *LL MISS COLORADO 024

	EXPECTED PROGENY DIFFERENCES						ULTRASOUND EPDS				INDEXES	
	CED	BW	WW	YW	MILK	SC	REA	%IMF	RIB FAT	\$T	\$M	\$FE
EPD	3.19	0.2	26	43	11	-0.05	0.44	-0.14	-0.03	87.21	12.5	15.95
% RANKING	65	45	55	40	20	95	30	90	50	40	80	45
	BW	WW	YW	REA	%IMF	RIB FAT	RUMP FAT					
RATIO	98	95	98	105	99	100	98					
COMTEMP	17	15	3	3	3	3	3					
ADJ. TRAIT	82	538	844	9.96	2.85	0.35	0.51					

Open



F & M CATTLE CO.

ID: 5546 BBU# C1199334 3/10/2025
 COLOR: RED SPRING OPEN HEIFER

- Built in longevity with both grandmothers being 11 years old.
- Top 15% of the breed for marbling.
- Sold growth EPDs.

VFF NEW HORIZON 19/3
 VFF ENFORCER 306E
VINSON 3300K
 *FIVE V TANKS MOMMA VINSON 934
 TA 646
FRENZEL 0206
 FRENZEL 6339
 VFF MS ADV 77-4
 TOP GUN 924-2-4
 *SPEAR RANCHES 3036
 WHISKEY RIVER 220
 *LASATER 6427
 LYSSY 112/458
 *FRENZEL 956

	EXPECTED PROGENY DIFFERENCES						ULTRASOUND EPDS				INDEXES	
	CED	BW	WW	YW	MILK	SC	REA	%IMF	RIB FAT	\$T	\$M	\$FE
EPD	3.49	-0.6	34	45	10	0.81	0.33	0.16	-0.03	93.02	25.49	17.53
% RANKING	55	20	30	35	35	25	40	15	50	35	20	35
	BW	WW	YW	REA	%IMF	RIB FAT	RUMP FAT					
RATIO		97	102	106	119	99	100					
COMTEMP		1	3	2	2	2	2					
ADJ. TRAIT		594	884	11.07	5.41	0.39	0.65					

Open



EMMAUS RANCH

ID: 2503 BBU# C1198420 DE-HORNED 1/23/2025
 COLOR: RED SPRING OPEN HEIFER

*DOUBLE L 7008

** L BAR 5502
 L BAR 4431

LL MR DOUBLE L 716

*LL MISS FIRE POWER 481

FIRE POWER 265
 LL MISS COLORADO 931
 ML608
 FRENZEL 4112

FRENZEL REDBONE 9359

ER 2202

ROCKING A 904

B Y R S 315
 ROCKING A 922

	EXPECTED PROGENY DIFFERENCES					ULTRASOUND EPDS					INDEXES		
	CE	BW	WW	YW	MK	SC	REA	IMF	RIB FAT	\$T	\$M	\$FE	
EPD	3	0.6	46	65	10	0.64	0.35	-0.16	-0.04	124.07	26.24	15.97	
%	70	60	10	10	35	40	40	95	15	10	15	45	
PERF.	BW	WW	YW	REA			%IMF	RIB FAT	RMP FT				
RATIO			107	98			99	106	96	122			
CONT.		1	2	2			2	2	2	2			
ADJ.			599	794			10.48	3.87	0.27	0.61			

Open



LARRY LAIRMORE

ID: 546 BBU# C1206606 DE-HORNED 1/22/2025
 COLOR: RED SPRING OPEN HEIFER

TRADEMARK 5318

J & K 1001
 M & M CATTLE CO 0718

ML CHECKMARK 028

ML 708

** FUSION 578/3
 ML59
 *DOUBLE L 7008
 BUSTER 033

LL MR PD 501

LL MISS PD 355

LL MISS POWER WAGON 955

FMC POWER WAGON 6105
 LL MISS FIRE POWER 740

	EXPECTED PROGENY DIFFERENCES					ULTRASOUND EPDS					INDEXES		
	CE	BW	WW	YW	MK	SC	REA	IMF	RIB FAT	\$T	\$M	\$FE	
EPD	4.13	0.6	47	63	10	1.41	0.69	0.11	-0.04	124.26	31.57	28.48	
%	40	60	5	10	35	3	10	25	15	10	4	2	
PERF.	BW	WW	YW	REA			%IMF	RIB FAT	RMP FT				
RATIO		98	106	104			93	114	94	84			
CONT.		8	8	3			3	3	3	3			
ADJ.		83	587	904			10.25	2.99	0.29	0.39			

Open



TOMBIGBEE FARM

ID: N5 BBU# C1201423 DE-HORNED 1/16/2025
 COLOR: RED SPRING OPEN HEIFER

MILLER 898

TANK 376
 LYSSY 103/685

LRB LEDGER 2208

M & M CATTLE CO 0718

L BAR 5549
 SACKET BEEFMASTERS 604
 *L BAR ESSENTIAL 7548
 ** SHOCKWAVE K-73

SIREPRO K-132

NG MS SIRE PRO 622H

*DESTINY 4622

J & K 1001
 *FRENZEL 971

	EXPECTED PROGENY DIFFERENCES					ULTRASOUND EPDS					INDEXES		
	CE	BW	WW	YW	MK	SC	REA	IMF	RIB FAT	\$T	\$M	\$FE	
EPD	3.93	0.2	48	70	8	1.14	0.83	-0.06	-0.02	133.87	28.11	27.04	
%	45	45	4	3	75	10	3	70	85	4	10	3	
PERF.	BW	WW	YW	REA			%IMF	RIB FAT	RMP FT				
RATIO		97	104	99			112	79	56	78			
CONT.		18	10	5			5	5	5	5			
ADJ.		70	577	919			12.83	3.11	0.21	0.45			

Open



TOMBIGBEE FARM

ID: N15 BBU# C1203486 POLLED 1/20/2025
 COLOR: RED MOT UL SPRING OPEN HEIFER

VFF NEW HORIZON 19/3

** MAVERICK 17/557
 VFF HONEY GIRL 43/8

VFF ENFORCER 306E

VFF MS ADV 77-4

VFF MR 16/2
 CAIN 009Y

LL MR PD 501

LL MISS PD 093

*LASATER 6420

*DOUBLE L 7008
 BUSTER 033

*
 LASATER BEEFMASTER 3279

	EXPECTED PROGENY DIFFERENCES					ULTRASOUND EPDS					INDEXES		
	CE	BW	WW	YW	MK	SC	REA	IMF	RIB FAT	\$T	\$M	\$FE	
EPD	4.12	-0.1	44	66	10	1.23	0.42	0.22	-0.01	131.21	26.6	31.83	
%	40	35	10	5	35	10	30	10	>95	4	15	1	
PERF.	BW	WW	YW	REA			%IMF	RIB FAT	RMP FT				
RATIO		94	111	99			98	138	171	115			
CONT.		18	10	5			5	5	5	5			
ADJ.		72	616	920			11.29	5.43	0.64	0.66			

Open



BLAU RANCH

ID: 516 BBU# C1197372 DE-HORNED 1/25/2025
 COLOR: RED SPRING OPEN HEIFER

*DOUBLE L 7008

** L BAR 5502
 L BAR 4431

FMC 9901

FRENZEL 6319

LYSSY 112/458
 *FRENZEL 990
 BLAU RANCH 6719
 ML 708

ML914

ML 201

ML030

ML DOMINATOR 526
 *ML 0930

	EXPECTED PROGENY DIFFERENCES					ULTRASOUND EPDS					INDEXES		
	CE	BW	WW	YW	MK	SC	REA	IMF	RIB FAT	\$T	\$M	\$FE	
EPD	1.45	1.2	31	47	7	0.55	0.07	-0.1	-0.04	92.87	13.48	17.64	
%	95	85	40	30	85	45	75	80	15	35	75	35	
PERF.	BW	WW	YW	REA			%IMF	RIB FAT	RMP FT				
RATIO			84										
CONT.		1	4	1			1	1	1	1			
ADJ.			570	727			8.83	3.79	0.22	0.37			

Open



TOMBIGBEE FARM

ID: N13 BBU# C1201438 DE-HORNED 1/15/2025
 COLOR: RED MOT UL SPRING OPEN HEIFER

VFF NEW HORIZON 19/3

** MAVERICK 17/557
 VFF HONEY GIRL 43/8

VFF ENFORCER 306E

VFF MS ADV 77-4

VFF MR 16/2
 CAIN 009Y

LL MR PD 501

LL MISS PD 093

*LASATER 6420

*DOUBLE L 7008
 BUSTER 033

*
 LASATER BEEFMASTER 3279

	EXPECTED PROGENY DIFFERENCES					ULTRASOUND EPDS					INDEXES		
	CE	BW	WW	YW	MK	SC	REA	IMF	RIB FAT	\$T	\$M	\$FE	
EPD	4.32	-0.2	50	72	10	1.27	0.46	0.21	-0.02	141.27	31.14	32.24	
%	35	30	3	2	35	5	25	10	85	2	5	1	
PERF.	BW	WW	YW	REA			%IMF	RIB FAT	RMP FT				
RATIO		97	117	98			98	117	120	117			
CONT.		18	10	5			5	5	5	5			
ADJ.		70	648	916			11.29	4.59	0.45	0.67			

Open

F & M CATTLE CO.



ID: 5543 BBU# C1199321 3/1/2025
 COLOR: RED SPRING OPEN HEIFER

VFF ENFORCER 306E

VFF NEW HORIZON
 VFF MS ADV 77-4

VINSON 3300K

*FIVE V TANKS MOMMA VINSON 934

TOP GUN 924-2-4
 *SPEAR RANCHES 3036
 BULLET PROOF 864
 LIKE A DIAMOND 739

SWB GUNSTOCK 61/13

F & M CATTLE CO 7323

M & M CATTLE CO 0729

L BAR 5549
 CARGILE 8190

	EXPECTED PROGENY DIFFERENCES					ULTRASOUND EPDS				INDEXES		
	CE	BW	WW	YW	MK	SC	REA	IMF	RIB FAT	\$T	\$M	\$FE
EPD	3.12	0.4	38	54	10	0.89	0.32	0.08	-0.01	108.9	23.89	19.51
%	65	55	20	20	35	20	45	30	>95	20	25	25
PERF.	BW	WW	YW	REA			%IMF	RIB FAT	RMP FT			
RATIO		91	98				94	81	101	100		
CONT.	1	3	2				2	2	2	2		
ADJ.		558	846				9.79	3.68	0.4	0.65		

Open

LARRY LAIRMORE



ID: 559 BBU# C1204875 DE-HORNED 2/18/2025
 COLOR: MOT UL WHITE UL SPRING OPEN HEIFER

ROCKIN' TWO STEP 7403

FRENZEL ROCKING F BAR 4906
 *FRENZEL 429

FMC DOUBLE TWO STEP 2913

FRENZEL 8239

LL MR DOUBLE L 421
 FRENZEL 4204
 **L BAR 5502
 L BAR 4431

*DOUBLE L 7008

*LL MISS DOUBLE L 645

*FOUNDATION BEEFMASTERS 5470

*
 FOUNDATION BEEFMASTERS 2397

	EXPECTED PROGENY DIFFERENCES					ULTRASOUND EPDS				INDEXES		
	CE	BW	WW	YW	MK	SC	REA	IMF	RIB FAT	\$T	\$M	\$FE
EPD	1.56	1.5	39	61	10	0.75	0.53	-0.1	-0.04	118.34	18.57	33.21
%	95	90	20	10	35	30	20	80	15	10	50	1
PERF.	BW	WW	YW	REA			%IMF	RIB FAT	RMP FT			
RATIO		103	109	105			106	94	111	96		
CONT.		17	15	3			3	3	3	3		
ADJ.		78	615	908			10	2.71	0.39	0.5		

Open

LARRY LAIRMORE



ID: 560 BBU# C1204876 DE-HORNED 2/26/2025
 COLOR: RED SPRING OPEN HEIFER

ROCKIN' TWO STEP 7403

FRENZEL ROCKING F BAR 4906
 *FRENZEL 429

FMC DOUBLE TWO STEP 2913

FRENZEL 8239

LL MR DOUBLE L 421
 FRENZEL 4204
 **L BAR 5502
 L BAR 4431

*DOUBLE L 7008

LL MISS DOUBLE L 245

LL MISS GAME CHANGER 058

LL GAME CHANGER 664
 LL MISS KID ROCK 739

	EXPECTED PROGENY DIFFERENCES					ULTRASOUND EPDS				INDEXES		
	CE	BW	WW	YW	MK	SC	REA	IMF	RIB FAT	\$T	\$M	\$FE
EPD	0.6	1.3	40	62	8	0.67	0.43	-0.26	-0.04	117.06	18.08	24.82
%	>95	85	15	10	75	35	30	>95	15	10	50	10
PERF.	BW	WW	YW	REA			%IMF	RIB FAT	RMP FT			
RATIO		100	105	99			103	63	58	84		
CONT.		8	8	3			3	3	3	3		
ADJ.		81	581	865			11.35	1.64	0.18	0.39		

Open

LARRY LAIRMORE



ID: 558 BBU# C1204857 DE-HORNED 2/17/2025
 COLOR: RED SPRING OPEN HEIFER

FRENZEL 7136

VFF MR 22/4
 FRENZEL 5358

ER TRIAD 2003

SACKET BEEFMASTERS 7229

VINSON 240
 *FRENZEL 2229
 TRADEMARK 5318
 ML 708

ML CHECKMARK 028

LL MISS CHECKMARK 336

LL MISS DOUBLE L 445

*DOUBLE L 7008
 MOUNTAIN PASS 8106

	EXPECTED PROGENY DIFFERENCES					ULTRASOUND EPDS				INDEXES		
	CE	BW	WW	YW	MK	SC	REA	IMF	RIB FAT	\$T	\$M	\$FE
EPD	2.93	0.8	39	49	10	1.15	0.52	0.03	-0.03	98.67	28.21	15.83
%	70	70	20	30	35	10	20	40	50	30	10	45
PERF.	BW	WW	YW	REA			%IMF	RIB FAT	RMP FT			
RATIO		96	116	97			105	123	148	133		
CONT.		8	8	3			3	3	3	3		
ADJ.		85	637	849			11.56	3.23	0.46	0.62		

Open

BLAU RANCH



ID: 502 BBU# C1197388 DE-HORNED 1/23/2025
 COLOR: RED SPRING OPEN HEIFER

MILLER 632

LL STRETCH 400
 SALT CREEK 117

FMC 9710

FRENZEL 3827

J & K 1001
 FRENZEL 1817
 TRADEMARK 5318
 ML 716

ML OLE 029

ML 352

ML 708

**FUSION 578/3
 ML59

	EXPECTED PROGENY DIFFERENCES					ULTRASOUND EPDS				INDEXES		
	CE	BW	WW	YW	MK	SC	REA	IMF	RIB FAT	\$T	\$M	\$FE
EPD	4.43	-0.1	35	52	10	0.91	1	-0.01	-0.05	103	21.98	21.89
%	30	35	30	20	35	20	1	55	2	25	30	15
PERF.	BW	WW	YW	REA			%IMF	RIB FAT	RMP FT			
RATIO		102	97				108	43	59	79		
CONT.		1	5	2			2	2	2	2		
ADJ.		668	841				11.83	0.61	0.11	0.25		

Open

ZEMKE FARMS



ID: 510 BBU# C1204229 HORNED 2/27/2025
 COLOR: RED SPRING OPEN HEIFER

*DOUBLE L 7008

**L BAR 5502
 L BAR 4431

LL MR DOUBLE L 716

*LL MISS FIRE POWER 481

FIRE POWER 265
 LL MISS COLORADO 931
 L BAR 7504
 M & M CATTLE CO 0743

M & M CATTLE CO 3917

DOUBLE D 845

DAVIS 425

BUSTER 914
 DAVIS DOUBLE D RANCH 8019

	EXPECTED PROGENY DIFFERENCES					ULTRASOUND EPDS				INDEXES		
	CE	BW	WW	YW	MK	SC	REA	IMF	RIB FAT	\$T	\$M	\$FE
EPD	0.19	1.6	43	62	10	0.33	0.49	-0.01	-0.02	121.69	22.41	21.67
%	>95	90	10	10	35	65	25	55	85	10	30	15
PERF.	BW	WW	YW	REA			%IMF	RIB FAT	RMP FT			
RATIO		82	110									
CONT.		15	14	1			1	1	1	1		
ADJ.		96	615	883			9.95	2.95	0.24	0.37		

Open



EMMAUS RANCH

ID: 2505 BBU# C1198422 DE-HORNED 2/5/2025
 COLOR: RED SPRING OPEN HEIFER

ML608 *DOUBLE L 7008
 VINSON 1255K ML443
 *FIVE V TANKS MOMMA VINSON 934 TOP GUN 924-2-4
 *SPEAR RANCHES 3036
 MATT ENSOR 915 VINSON 543
 ENSOR 508
 ER 2122 FRENZEL 0102
 *FRENZEL BROS 0924
 FRENBROS 2918

	EXPECTED PROGENY DIFFERENCES					ULTRASOUND EPDS					INDEXES		
	CE	BW	WW	YW	MK	SC	REA	IMF	RIB FAT	\$T	\$M	\$FE	
EPD	1.51	0.4	33	55	11	0.67	0.62	-0.06	-0.03	108.09	15.81	24.96	
%	95	55	35	20	20	35	15	70	50	20	65	5	
PERF.	BW	WW	YW	REA			%IMF	RIB FAT	RMP FT				
RATIO			93	102			101	94	104	78			
CONT.		1	2	2			2	2	2	2			
ADJ.			519	824			10.77	3.4	0.29	0.39			

Open



EUBANK FAMILY FARMS

ID: 2524 BBU# C1196100 DE-HORNED 2/19/2025
 COLOR: RED SPRING OPEN HEIFER

TANK 376 *DOUBLE L 7008
 *FIVE V TANKS MOMMA VINSON 934
 FMC 2001 SALT CREEK BEEFMASTERS 1/03
 *FRENZEL 429 KENT MINDEMANN 920
 F & M CATTLE CO 6404 J & K 1001
 KING 7124
 EFF 2111 FRENZEL 2216
 EUBANK 2115 ORR 740

	EXPECTED PROGENY DIFFERENCES					ULTRASOUND EPDS					INDEXES		
	CE	BW	WW	YW	MK	SC	REA	IMF	RIB FAT	\$T	\$M	\$FE	
EPD	1.97	1.8	46	72	12	1.4	0.7	-0.11	-0.02	136.42	26.45	24.75	
%	90	95	10	2	10	3	10	85	85	3	15	10	
PERF.	BW	WW	YW	REA			%IMF	RIB FAT	RMP FT				
RATIO			111										
CONT.		1	5	1			1	1	1	1			
ADJ.			531	771			10.01	2.8	0.23	0.43			

Open



BLAU RANCH

ID: 503 BBU# C1206641 DE-HORNED 2/2/2025
 COLOR: RED SPRING OPEN HEIFER

ML608 *DOUBLE L 7008
 FRENZEL 8918 ML443
 FRENZEL 0109 L BAR 6190
 FRENZEL 8110
 FMC 9706 FMC 7108
 F & M CATTLE CO 3335
 ML 320 TRADEMARK 5318
 ML051 ML447

	EXPECTED PROGENY DIFFERENCES					ULTRASOUND EPDS					INDEXES		
	CE	BW	WW	YW	MK	SC	REA	IMF	RIB FAT	\$T	\$M	\$FE	
EPD	2.14	1.4	37	55	9	1.02	0.52	-0.14	-0.02	108.14	20.63	14.03	
%	85	90	20	20	55	15	20	90	85	20	40	55	
PERF.	BW	WW	YW	REA			%IMF	RIB FAT	RMP FT				
RATIO			107	103			92	157	141	121			
CONT.		1	5	2			2	2	2	2			
ADJ.			696	896			9.98	2.24	0.26	0.38			

Open



F & M CATTLE CO.

ID: 5532 BBU# C1199294 1/19/2025
 COLOR: RED SPRING OPEN HEIFER

ROCKIN' TWO STEP 7403 FRENZEL ROCKING F BAR 4906
 *FRENZEL 429
 FMC DOUBLE TWO STEP 2913 LL MR DOUBLE L 421
 FRENZEL 8239 FRENZEL 4204
 FIRE POWER 265
 LL MR FIRE POWER 464 *LL MISS COLORADO 920
 ML847 FOUNDATION BEEFMASTERS 7532
 ML 565 BLAU RANCH 23

	EXPECTED PROGENY DIFFERENCES					ULTRASOUND EPDS					INDEXES		
	CE	BW	WW	YW	MK	SC	REA	IMF	RIB FAT	\$T	\$M	\$FE	
EPD	-0.88	2.8	37	55	11	0.57	0.49	-0.03	-0.03	107.95	18.53	28.08	
%	>95	>95	20	20	20	45	25	60	50	20	50	3	
PERF.	BW	WW	YW	REA			%IMF	RIB FAT	RMP FT				
RATIO			98										
CONT.		1	26	1			1	1	1	1			
ADJ.			602	909			10.19	4.46	0.4	0.73			

Open



F & M CATTLE CO.

ID: 5443 BBU# C1199693 DE-HORNED 3/14/2025
 COLOR: RED SPRING OPEN HEIFER

CHRK RASIN' CAIN 1780X CHRK GENESIS 1500T
 FMC 7108 CHANNAROCK FARM 720/0
 F & M CATTLE CO 5346 WHISKEY RIVER 220
 FOUNDATION BEEFMASTERS L57
 WPR'S 1798 ** WPR'S THE TOTAL PACKAGE 7595
 ** WPR'S JUNK IN THE TRUNK 0726
 FRENZEL 0365 *FRENZEL 712
 *FRENZEL 2242 FRENZEL 941

	EXPECTED PROGENY DIFFERENCES					ULTRASOUND EPDS					INDEXES		
	CE	BW	WW	YW	MK	SC	REA	IMF	RIB FAT	\$T	\$M	\$FE	
EPD	2.11	1.3	32	54	12	0.86	0.26	0.04	-0.01	107.64	16.16	20.16	
%	85	85	35	20	10	25	50	40	>95	20	60	20	
PERF.	BW	WW	YW	REA			%IMF	RIB FAT	RMP FT				
RATIO		96	96	90			94	123	95	88			
CONT.		22	22	3			3	3	3	3			
ADJ.		72	630	816			10.52	4.32	0.38	0.58			

Open



REED CATTLE CO.

ID: 522 BBU# C1204273 HORNED 3/13/2025
 COLOR: RED SPRING OPEN HEIFER

ML 769 J & K 1001
 ML 0963
 FRENZEL 9916 J & K 1001
 FRENZEL 4602 FRENZEL 935
 ** FUSION 578/3
 JK 913/8 JK PRAIRIE FIRE 349/6
 REED 209 EUBANK 1175
 PINE SPRINGS 933 MISS PINE SPRINGS 709

	EXPECTED PROGENY DIFFERENCES					ULTRASOUND EPDS					INDEXES		
	CE	BW	WW	YW	MK	SC	REA	IMF	RIB FAT	\$T	\$M	\$FE	
EPD	4.56	-0.1	27	40	10	0.36	0.39	0.13	-0.01	85.57	15.9	12.91	
%	30	35	55	45	35	65	35	20	>95	45	60	65	
PERF.	BW	WW	YW	REA			%IMF	RIB FAT	RMP FT				
RATIO		90	102										
CONT.		4	4	1			1	1	1	1			
ADJ.		79	577	864			11.49	3.27	0.2	0.3			

Open



ZEMKE FARMS

ID: 535 BBU# C1204292 HORNED 3/18/2025
 COLOR: RED SPRING OPEN HEIFER

MILLER 8113

MAGEE 210

MAGEE 455

MCALESTER 4521

ZEMKE 313

PINE SPRINGS 902

LL STRETCH 400
 MILLER 537

*SCHNEIDER 0481
 PINE SPRINGS RANCH 255
 J & K 1001
 KENT MINDEMANN 95

LL MR DOUBLE L 602
 PINE SPRINGS 381

	EXPECTED PROGENY DIFFERENCES					ULTRASOUND EPDS					INDEXES		
	CE	BW	WW	YW	MK	SC	REA	IMF	RIB FAT	\$T	\$M	\$FE	
EPD	3.28	0.3	40	55	9	0.85	0.77	-0.14	-0.03	106.57	25.24	15.7	
%	60	50	15	20	55	25	4	90	50	20	20	45	
PERF.	BW	WW	YW	REA		%IMF	RIB FAT	RMP FT					
RATIO	98	111											
CONT.	4	4	1			1	1	1	1				
ADJ.	77	641	845			11.39	0.81	0.17	0.21				

Open



C & G CATTLE CO.

ID: 52 BBU# C1204896 HORNED 2/11/2025
 COLOR: RED SPRING OPEN HEIFER

WPR'S 1798

FRENZEL 0919

FRENZEL 4606

JIM COLVIN 185

3-K 99/8

3-K 1010/3

**WPR'S THE TOTAL PACKAGE 7595
 **WPR'S JUNK IN THE TRUNK 0726

J & K 1001
 FRENZEL 1246
 JACK OF DIAMONDS 99/5
 WITTENBURG 1262

SIDDONS 205/6
 GUAJOLOTE 940

	EXPECTED PROGENY DIFFERENCES					ULTRASOUND EPDS					INDEXES		
	CE	BW	WW	YW	MK	SC	REA	IMF	RIB FAT	\$T	\$M	\$FE	
EPD	-0.3	2.6	29	47	10	0.34	0.56	-0.07	-0.03	94.2	10.98	20.08	
%	>95	>95	45	30	35	65	15	70	50	35	85	20	
PERF.	BW	WW	YW	REA		%IMF	RIB FAT	RMP FT					
RATIO		103											
CONT.	1	2	1			1	1	1	1				
ADJ.		629	821			9.41	1.88	0.1	0.26				

Open



ROCKING K BEEFMASTERS

ID: 835 BBU# C1204464 POLLED 3/6/2025
 COLOR: DARK RED SPRING OPEN HEIFER

LL MR PD 501

LL MR PD 870

LL MISS FIRE POWER 543

FMC 7108

ROCKIN5 750

FMC 9218

*DOUBLE L 7008
 BUSTER 033

FIRE POWER 265
 LL MISS TEMPLETX 223
 CHRK RASIN' CAIN 1780X
 F & M CATTLE CO 5346

MILLER 632
 F & M CATTLE CO 6430

	EXPECTED PROGENY DIFFERENCES					ULTRASOUND EPDS					INDEXES		
	CE	BW	WW	YW	MK	SC	REA	IMF	RIB FAT	\$T	\$M	\$FE	
EPD	0.1	1.6	33	49	15	0.74	0.52	0.01	-0.03	98.71	23.21	24.05	
%	>95	90	35	30	1	30	20	50	50	30	25	10	
PERF.	BW	WW	YW	REA		%IMF	RIB FAT	RMP FT					
RATIO	85	109											
CONT.	7	7	1			1	1	1	1				
ADJ.	79	604	784			15.05	2.36	0.26	0.37				

Open



F & M CATTLE CO.

ID: 5128 BBU# C1199534 DE-HORNED 3/7/2025
 COLOR: RED SPRING OPEN HEIFER

FMC 7108

FMC 2808

F & M CATTLE CO 6104

ML914

FMC 3110

FMC 1337

CHRK RASIN' CAIN 1780X
 F & M CATTLE CO 5346

WPR'S 3101
 F & M CATTLE CO 4109
 BLAU RANCH 6719
 ML 708

FRENZEL 8902
 *F & M CATTLE CO 3259

	EXPECTED PROGENY DIFFERENCES					ULTRASOUND EPDS					INDEXES		
	CE	BW	WW	YW	MK	SC	REA	IMF	RIB FAT	\$T	\$M	\$FE	
EPD	1.33	1	18	36	9	0.36	0.19	0.08	-0.03	76.84	5.07	15.96	
%	95	75	85	55	55	65	60	30	50	55	>95	45	
PERF.	BW	WW	YW	REA		%IMF	RIB FAT	RMP FT					
RATIO	119.5	90	98			91	70	67	83				
CONT.	14	12	2			2	2	2	2				
ADJ.	72	466	752			9.67	2.44	0.16	0.34				

Open



J & L RANCH BEEFMASTERS

ID: A519 BBU# C1204551 POLLED 2/14/2025
 COLOR: RED SPRING OPEN HEIFER

FRENZEL 4118

FMC INFERNO

F & M CATTLE 6204

*SCHNEIDER 0481

J&L 901

31/7

DIA L RAN 1-1
 *FRENZEL 2242

FRENZEL 3230
 *F & M CATTLE CO 3313
 DWIGHT RAMPLEY 404
 FRENZEL 4115

CIRCLE C 50/2
 24/4

	EXPECTED PROGENY DIFFERENCES					ULTRASOUND EPDS					INDEXES		
	CE	BW	WW	YW	MK	SC	REA	IMF	RIB FAT	\$T	\$M	\$FE	
EPD	4.3	0.1	40	51	12	0.86	0.55	0.2	0.01	106.04	30.66	15.47	
%	35	40	15	25	10	25	15	10	>95	20	5	45	
PERF.	BW	WW	YW	REA		%IMF	RIB FAT	RMP FT					
RATIO	95	112											
CONT.	8	8	1			1	1	1	1				
ADJ.	73	592	850			11.41	5.61	0.46	0.58				

Open





MOCKINGBIRD HILL RANCH

ID: 4167 BBU# C1198058 POLLED 9/27/2024
 COLOR: RED FALL BRED HEIFER

- Super feminine polled female.
- 4 Pacesetters in pedigree.
- Dam is a high growth Tank daughter.
- 15% WW, 10% YW, 35% REA and 15% IMF

MR CJ M DIAMOND'S 27/17

MDIAMOND THE CHIEF 132

M DIAMOND MISS CUPID-39

TANK 376

MDIAMOND RESPECT 117

QU ARETHA 38

*EMS RING OF FIRE 130

*CJ'S EYE CANDY 1320

BUSTED 22 603

M DIAMOND 15012

*DOUBLE L 7008

*FIVE V TANKS MOMMA VINSON 934

BLACK THUNDER 4315

D J BEEFMASTERS 707

	EXPECTED PROGENY DIFFERENCES						ULTRASOUND EPDS				INDEXES	
	CED	BW	WW	YW	MILK	SC	REA	%IMF	RIB FAT	\$T	\$M	\$FE
EPD	2.07	1.5	40	64	10	0.99	0.4	0.17	-0.02	126.39	19.16	23.38
% RANKING	90	90	15	10	35	15	35	15	85	10	45	10
	BW		WW		YW		REA	%IMF	RIB FAT	RUMP FAT		
RATIO												
COMTEMP		1	1	1			1	1	1	1		
ADJ. TRAIT		60	498	789			7.73	2.54	0.16	0.21		

AI to WS 24023. NS to FMC 2808 & FMC 2112. ECD Aug 10-Nov 15.



F & M CATTLE CO.

ID: 4638 BBU# C1202160 POLLED 9/2/2024
 COLOR: RED FALL BRED HEIFER

- Full sister to FMC 9706 "Dub".
- Donor prospect with fantastic eye appeal.
- Polled female with solid growth numbers.
- Dam is a top donor in the FMC program.

CHRK RASIN' CAIN 1780X

FMC 7108

F & M CATTLE CO 5346

RACHAEL'S RANCH 939

F & M CATTLE CO 3335

KING 720

CHRK GENESIS 1500T

CHANNAROCK FARM 720/0

WHISKEY RIVER 220

FOUNDATION BEEFMASTERS L57
 SPEAR RANCHES 6096

SPEAR RANCHES 7060

THE KING 318

KING 1220

	EXPECTED PROGENY DIFFERENCES						ULTRASOUND EPDS				INDEXES	
	CED	BW	WW	YW	MILK	SC	REA	%IMF	RIB FAT	\$T	\$M	\$FE
EPD	3.25	0.5	29	50	9	0.95	0.26	0.13	-0.01	102.18	13.03	11.52
% RANKING	60	55	45	25	55	20	50	20	>95	25	75	75
	BW		WW		YW		REA	%IMF	RIB FAT	RUMP FAT		
RATIO												
COMTEMP		1	1	1			1	1	1	1		
ADJ. TRAIT			620	802			7.71	3.09	0.31	0.74		

AI to WS 24023. NS to FMC 2808 & FMC 2112. ECD Aug 10-Nov 15.



F & M CATTLE CO.

ID: 4713 BBU# C1198034 POLLED 8/16/2024
 COLOR: RED FALL BRED HEIFER

- Polled Double 2 Step daughter.
- Dam is a Miller 898 donor in the FMC program.
- 3 Pacesetters in the pedigree.
- Top 20% \$T and 30% \$M

ROCKIN' TWO STEP 7403

FMC DOUBLE TWO STEP 2913

FRENZEL 8239

MILLER 898

F BAR 1302

*FRENZEL 1216

FRENZEL ROCKING F BAR 4906

*FRENZEL 429

LL MR DOUBLE L 421

FRENZEL 4204
 TANK 376

LYSSY 103/685

*FOUNDATION BEEFMASTERS 5036

F BAR 8323

	EXPECTED PROGENY DIFFERENCES						ULTRASOUND EPDS				INDEXES	
	CED	BW	WW	YW	MILK	SC	REA	%IMF	RIB FAT	\$T	\$M	\$FE
EPD	3.49	0.3	36	55	11	0.92	0.53	-0.02	-0.03	108.15	22.36	24.35
% RANKING	55	50	25	20	20	20	20	55	50	20	30	10
	BW		WW		YW		REA	%IMF	RIB FAT	RUMP FAT		
RATIO												
COMTEMP		1	1	1			1	1	1	1		
ADJ. TRAIT			573	697			6.15	2.18	0.16	0.27		

AI to WS 24023. NS to FMC 2808 & FMC 2112. ECD Aug 10-Nov 15.



J & L RANCH BEEFMASTERS

ID: A460 BBU# C1197152 POLLED 9/5/2024
 COLOR: RED FALL BRED HEIFER

- Good growth EPDS with a 124% WW ratio.
- Polled McAlester daughter/
- Very attractively designed female.
- 3 Pacesetters in pedigree.

J & K 1001
 MCALESTER 4521
 KENT MINDEMANN 95
 MOMENTUM K-146
 *FRO K-148
 CHRK RASIN' CAIN 1780X
 *SALLY K-41
 BANDITO 958/2
 *LEGS K-58

JLRB 051

KRUSE FARMS K218

NORT K-108

KRUSE FARMS K-150

STOCKINGS K-99

EXPECTED PROGENY DIFFERENCES							ULTRASOUND EPDS				INDEXES	
	CED	BW	WW	YW	MILK	SC	REA	%IMF	RIB FAT	\$T	\$M	\$FE
EPD	3.86	0.2	33	42	8	0.96	0.41	0.18	-0.03	89.44	23.08	13.36
% RANKING	45	45	35	40	75	20	30	15	50	40	25	60
	BW	WW	YW	REA	%IMF	RIB FAT	RUMP FAT					
RATIO	103	123										
COMTEMP	10	5	1				1	1	1	1		
ADJ. TRAIT	68	525	731				7.77	2.25	0.14	0.2		

AI to WS 24023. NS to FMC 2808 & FMC 2112. ECD Aug 10-Nov 15.



SCOTT SPRUIELL

ID: 4134 BBU# C1199456 9/13/2024
 COLOR: RED FALL BRED HEIFER

- Dub granddaughter
- 3 Pacesetters in pedigree.
- Beautiful red color.
- Big weaning weight of 700 pounds.

FMC 7108
 FMC 9706
 F & M CATTLE CO 3335
 J & K 1001
 *ML311
 JK AMERICAN DREAM 6/2
 ROD 716/17
 ROD 674
 ROCKY CREEK 9027/8
 *ROCKY CREEK 0381-9

ML 230

ML 727

ROD 716/17

RC 134/21

*ROCKY CREEK 2731

EXPECTED PROGENY DIFFERENCES							ULTRASOUND EPDS				INDEXES	
	CED	BW	WW	YW	MILK	SC	REA	%IMF	RIB FAT	\$T	\$M	\$FE
EPD	3.94	0.3	30	43	10	0.75	0.25	-0.07	-0.02	86.97	19.43	11.85
% RANKING	40	50	45	40	35	30	55	70	85	40	45	75
	BW	WW	YW	REA	%IMF	RIB FAT	RUMP FAT					
RATIO	98											
COMTEMP	8	1	1				1	1	1	1		
ADJ. TRAIT	72	700	739				7.7	0.66	0.16	0.21		

AI to WS 24023. NS to FMC 2808 & FMC 2112. ECD Aug 10-Nov 15.



HINES BEEFMASTERS

ID: 417 BBU# C1203177 DE-HORNED 8/16/2024
 COLOR: RED FALL BRED HEIFER

- Top 10% WW, 5% YW, 10% \$T and 20% \$M
- Miller 898 daughter.
- Perfectly blended pedigree for added performance and longevity.

*DOUBLE L 7008
 TANK 376
 *FIVE V TANKS MOMMA VINSON 934
 ** MAVERICK 17/557
 LYSSY 103/685
 JEWELLA 004
 FRENZEL 1225
 ML437
 ML 1029
 KING 9548
 FRENZEL 3245
 FRENZEL 721

MILLER 898

LYSSY 103/685

ML437

ENSOR 745

FRENZEL 3245

EXPECTED PROGENY DIFFERENCES							ULTRASOUND EPDS				INDEXES	
	CED	BW	WW	YW	MILK	SC	REA	%IMF	RIB FAT	\$T	\$M	\$FE
EPD	1.96	1.2	44	66	9	1.49	0.55	-0.04	-0.03	126.73	24.39	18.29
% RANKING	90	85	10	5	55	2	15	65	50	10	20	30
	BW	WW	YW	REA	%IMF	RIB FAT	RUMP FAT					
RATIO	101	97	98				94	100	73	65		
COMTEMP	4	3	2				2	2	2	2		
ADJ. TRAIT	73	524	842				9.22	2.39	0.18	0.28		

AI to WS 24023. NS to FMC 2808 & FMC 2112. ECD Aug 10-Nov 15.



BLAU RANCH

ID: 451 BBU# C1196128 HORNED 8/14/2024
 COLOR: RED FALL BRED HEIFER

- 4 Pacesetters in pedigree.
- Another predictable FMC 9901 X Trademark mating.
- 20% WW, 20% YW, 5% REA, 20% \$T and 20% \$M

*DOUBLE L 7008
 L BAR 4431
 LYSSY 112/458
 *FRENZEL 990
 J & K 1001
 M & M CATTLE 0718
 *FOUNDATION BEEFMASTERS 4248
 BLAU RANCH 51

FMC 9901

FRENZEL 6319

TRADEMARK 5318

ML860

*ML 1042

EXPECTED PROGENY DIFFERENCES							ULTRASOUND EPDS				INDEXES	
	CED	BW	WW	YW	MILK	SC	REA	%IMF	RIB FAT	\$T	\$M	\$FE
EPD	2.08	0.8	39	53	11	0.7	0.73	0.03	-0.03	105.89	25.61	21.68
% RANKING	90	70	20	20	20	35	10	40	50	20	20	15
	BW		WW	YW	REA		%IMF	RIB FAT	RUMP FAT			
RATIO			97	94			104	110	84	94		
COMTEMP		1	2	2			2	2	2	2		
ADJ. TRAIT			611	789			9.16	2.01	0.13	0.25		

AI to WS 24023. NS to FMC 2808 & FMC 2112. ECD Aug 10-Nov 15.



F & M CATTLE CO.

ID: 4708 BBU# C1202164 9/7/2024
 COLOR: LIGHT RED FALL BRED HEIFER

- Sire was high grading bull at the 2023 Oklahoma sale.
- Maternal grandsire was high grading bull in Texas 2014.
- High growth EPDs of 15% WW and 20% YW

LYSSY 112/458
 FRENZEL 6323
 FRENZEL 989
 TANK 376
 *MISTY RED 201
 FRENZEL 3230
 LL MR 3230 925
 LL MISS DOUBLE L 427
 J & K 1001
 BROOKSHIRE 337

ENSOR GOLDDIGGER 184

ENSOR 884

FMC 1804

F & M CATTLE CO 4511

EXPECTED PROGENY DIFFERENCES							ULTRASOUND EPDS				INDEXES	
	CED	BW	WW	YW	MILK	SC	REA	%IMF	RIB FAT	\$T	\$M	\$FE
EPD	2.52	1.3	40	53	8	0.77	0.56	-0.08	-0.04	104.25	24.08	14.47
% RANKING	80	85	15	20	75	30	15	75	15	25	25	55
	BW		WW	YW	REA		%IMF	RIB FAT	RUMP FAT			
RATIO												
COMTEMP		1	1	1			1	1	1	1		
ADJ. TRAIT			491	718			6.9	2.01	0.19	0.41		

AI to WS 24023. NS to FMC 2808 & FMC 2112. ECD Aug 10-Nov 15.



GARDNER FARMS

ID: 442 BBU# C1197749 DE-HORNED 8/28/2024
 COLOR: RED FALL BRED HEIFER

- Great combination of genetics.
- Top 20% WW and 15% YW.
- Sire was top 10 bull at the Texas sale 2023.

*DOUBLE L 7008
 LL MR PD 501
 BUSTER 033
 FIRE POWER 265
 *LL MISS FIRE POWER 481
 LL MISS COLORADO 931
 KID ROCK 4218
 LL MR KID ROCK 767
 BUSTER 079
 WHITEHALL W156
 WHITEHALL W123

LL COMMITMENT 217

*LL MISS FIRE POWER 481

LL MR KID ROCK 767

GF CFG LADY 767 209

WHITEHALL W258

EXPECTED PROGENY DIFFERENCES							ULTRASOUND EPDS				INDEXES	
	CED	BW	WW	YW	MILK	SC	REA	%IMF	RIB FAT	\$T	\$M	\$FE
EPD	3.65	0.6	37	58	11	0.74	0.13	-0.12	-0.03	111.68	21.53	32.85
% RANKING	50	60	20	15	20	30	65	85	50	15	35	1
	BW		WW	YW	REA		%IMF	RIB FAT	RUMP FAT			
RATIO		90	103									
COMTEMP		3	3	1			1	1	1	1		
ADJ. TRAIT			82	505	744		6.66	1.52	0.19	0.21		

AI to WS 24023. NS to FMC 2808 & FMC 2112. ECD Aug 10-Nov 15.

F & M CATTLE CO.



ID: 4656 BBU# C1198031 8/25/2024
 COLOR: RED FALL BRED HEIFER

LL MR PD 501
LL MR PD 905
 LL MISS FIRE POWER 646
 *VINSON 949
***F & M CATTLE 3254**
 *KENT MINDEMANN 958

*DOUBLE L 7008
 BUSTER 033
 FIRE POWER 265
 MISS ABILENE 1142
 BUSTER 672
 VINSON 742
 SPADE 107
 KENT MINDEMANN 258

	EXPECTED PROGENY DIFFERENCES					ULTRASOUND EPDS				INDEXES		
	CE	BW	WW	YW	MK	SC	REA	IMF	RIB FAT	\$T	\$M	\$FE
EPD	2.76	0.5	42	57	13	1.27	0.65	0.03	-0.02	113.24	31.96	38.78
%	75	55	10	15	3	5	10	40	85	15	4	1
PERF.	BW		WW	YW	REA		%IMF	RIB FAT	RMP FT			
RATIO			110	92			92	102	119	120		
CONT.		1	6	2			2	2	2	2		
ADJ.			557	842			8.27	2.66	0.28	0.53		

At to WS 24023. NS to FMC 2808 & FMC 2112. ECD Aug 10-Nov 15.



BALLARD MOUNTAIN FARM

ID: 411 BBU# C1195970 HORNED 8/26/2024
 COLOR: RED FALL BRED HEIFER

FRENZEL 3230
FRENZEL 8814
 *FRENZEL 1128
 GFF'S 1602
BALMTNFM 007
 JK GENE CHOICE 301/7

KING 9548
 FRENZEL 987
 *BROADWAY 807
 *FRENZEL 956
 TOP GUN 1321
 GFF'S VANNA WHITE 44
 CHRK GENESIS 1500T
 AVA 778

	EXPECTED PROGENY DIFFERENCES					ULTRASOUND EPDS				INDEXES		
	CE	BW	WW	YW	MK	SC	REA	IMF	RIB FAT	\$T	\$M	\$FE
EPD	4.13	0.8	31	46	10	0.98	0.2	-0.11	-0.03	91.22	19.18	13.22
%	40	70	40	35	35	15	60	85	50	35	45	65
PERF.	BW		WW	YW	REA		%IMF	RIB FAT	RMP FT			
RATIO		109	99	98			90	93	102	68		
CONT.		3	3	2			2	2	2	2		
ADJ.		66	549	784			8.22	2.47	0.24	0.18		

At to WS 24023. NS to FMC 2808 & FMC 2112. ECD Aug 10-Nov 15.



DANCING G'S FARM

ID: 94/165 BBU# C1198018 HORNED 9/17/2024
 COLOR: RED WHITE UL FALL BRED HEIFER

FMC 8506
GLC ZYDECO 142
 *F & M CATTLE CO 5339
 LEVOLTO Q802
DG 100/72
 SM RIPPLE 5026

J & K 1001
 *BEEFOR 59/5
 WHISKEY RIVER 220
 KENT MINDEMANN 525
 BLACK THUNDER 4315
 Q 004
 CAIN 294Z
 SM MISS 320

	EXPECTED PROGENY DIFFERENCES					ULTRASOUND EPDS				INDEXES		
	CE	BW	WW	YW	MK	SC	REA	IMF	RIB FAT	\$T	\$M	\$FE
EPD	0.95	2.2	44	57	12	1.21	0.5	0.17	-0.02	115.6	31.01	11.23
%	>95	>95	10	15	10	10	20	15	85	15	5	75
PERF.	BW		WW	YW	REA		%IMF	RIB FAT	RMP FT			
RATIO		104	107				88	71	86	85		
CONT.		3	2	1			2	2	2	2		
ADJ.		95	590	849			6.31	3.55	0.19	0.32		

At to WS 24023. NS to FMC 2808 & FMC 2112. ECD Aug 10-Nov 15.

ATF



ID: 433 BBU# C1193727 DE-HORNED 8/2/2024
 COLOR: RED FALL BRED HEIFER

LL GAME CHANGER 664
LL MR GAME CHANGER 910
 *LL MISS COLORADO 021
 COVER BOY 6329
AT 118
 HOLDING CLASS 705

*DOUBLE L 7008
 T.A. 313
 *FOUNDATION BEEFMASTERS 5222
 *MISS COLORADO 611
 LYSSY 112/458
 *FRENZEL 1202
 HOLDING ACES 7/3
 FIRST CLASS 1911

	EXPECTED PROGENY DIFFERENCES					ULTRASOUND EPDS				INDEXES		
	CE	BW	WW	YW	MK	SC	REA	IMF	RIB FAT	\$T	\$M	\$FE
EPD	3.09	0.7	29	41	10	0.36	0.55	-0.16	-0.05	82.74	17.16	7.04
%	65	65	45	45	35	65	15	95	2	50	55	95
PERF.	BW		WW	YW	REA		%IMF	RIB FAT	RMP FT			
RATIO												
CONT.		1	1	1			1	1	1	1		
ADJ.		69	491	756			9.67	2.69	0.2	0.4		

At to WS 24023. NS to FMC 2808 & FMC 2112. ECD Aug 10-Nov 15.



DANCING G'S FARM

ID: 84/153 BBU# C1198013 HORNED 8/16/2024
 COLOR: BLACK FALL BRED HEIFER

VFF 3008G
RR THE BULL WITH NO NAME 136
 RR BUFFY 946
 FRENZEL 8204
EFB 117
 MATT ENSOR 903

VFF CROWN ROYAL 139C
 VFF CELIA 215C
 LL MR DOUBLE L 421
 HALEPESKA 450
 FRENZEL 3112
 *FRENZEL 3403
 FRENZEL 6323
 SIMON CREEK 344

	EXPECTED PROGENY DIFFERENCES					ULTRASOUND EPDS				INDEXES		
	CE	BW	WW	YW	MK	SC	REA	IMF	RIB FAT	\$T	\$M	\$FE
EPD	6.22	-0.9	42	59	10	0.94	0.34	0.24	-0.02	119.07	28.11	25.3
%	10	15	10	10	35	20	40	10	85	10	10	5
PERF.	BW		WW	YW	REA		%IMF	RIB FAT	RMP FT			
RATIO			97	101			102	95	78	103		
CONT.		1	6	2			2	2	2	2		
ADJ.			523	812			8.25	2.85	0.16	0.37		

At to WS 24023. NS to FMC 2808 & FMC 2112. ECD Aug 10-Nov 15.



F & M CATTLE CO.

ID: 4663 BBU# C1202163 8/20/2024
 COLOR: RED FALL BRED HEIFER

TANK 376
F BAR 0608
 F BAR 4601
 ML539
FRENZEL 9410
 FRENZEL 6328

*DOUBLE L 7008
 *FIVE V TANKS MOMMA VINSON 934
 J & K 1001
 FRENZEL 987
 VINSON 029
 ML 1036
 CF 518/0
 FRENZEL 969

	EXPECTED PROGENY DIFFERENCES					ULTRASOUND EPDS				INDEXES		
	CE	BW	WW	YW	MK	SC	REA	IMF	RIB FAT	\$T	\$M	\$FE
EPD	2.48	0.9	31	52	10	0.83	0.48	0.03	-0.02	103.93	14.51	19.86
%	80	75	40	20	35	25	25	40	85	25	70	20
PERF.	BW		WW	YW	REA		%IMF	RIB FAT	RMP FT			
RATIO			88									
CONT.		1	6	1			1	1	1	1		
ADJ.			444	751			9.34	2.57	0.4	0.73		

At to WS 24023. NS to FMC 2808 & FMC 2112. ECD Aug 10-Nov 15.



DANCING G'S FARM

ID: 84/155 BBU# C1198014 POLLED 8/24/2024
 COLOR: BLACK FALL BRED HEIFER

VFF 3008G VFF CROWN ROYAL 139C
 VFF CELIA 215C
RR THE BULL WITH NO NAME 136
 RR BUFFY 946
 WPR'S 1722
MIA 19225
 ROGER & CINDY HOLDEN R1582
 LL MR DOUBLE L 421
 HALEPESKA 450
 WPR'S CAPONE 1333
 WPR'S 1242
 DAVIS DOUBLE D RANCH 9875
 ROGER & CINDY HOLDEN 1233

EXPECTED PROGENY DIFFERENCES						ULTRASOUND EPDS				INDEXES		
	CE	BW	WW	YW	MK	SC	REA	IMF	RIB FAT	\$T	\$M	\$FE
EPD	3.4	0.6	39	58	11	0.92	0.22	0.27	-0.02	117.33	23.03	24.31
%	55	60	20	15	20	20	55	5	>95	10	25	10
PERF.	BW	WW	YW	REA	%IMF	RIB FAT	RMP FT					
RATIO		94	100		97	80	103	124				
CONT.	1	6	3		3	3	3	3				
ADJ.		508	748		8.16	3.07	0.37	0.63				

At to WS 24023. NS to FMC 2808 & FMC 2112. ECD Aug 10-Nov 15.



BALLARD MOUNTAIN FARM

ID: 409 BBU# C1195967 HORNED 8/24/2024
 COLOR: RED FALL BRED HEIFER

FRENZEL 3230 KING 9548
 FRENZEL 987
FRENZEL 8814
 *FRENZEL 1128
 *BROADWAY 807
 *FRENZEL 956
 LYSSY & SONS 100/32
 FRENZEL 2275
 F & M CATTLE CO 7703
 KENT MINDEMANN 721
 FOUNDATION BEEFMASTERS 2015
 KENT MINDEMANN 429

EXPECTED PROGENY DIFFERENCES						ULTRASOUND EPDS				INDEXES		
	CE	BW	WW	YW	MK	SC	REA	IMF	RIB FAT	\$T	\$M	\$FE
EPD	4.06	0.4	29	40	11	0.93	0.58	0.11	-0.02	85.19	20.53	14.63
%	40	55	45	45	20	20	15	25	85	45	40	55
PERF.	BW	WW	YW	REA	%IMF	RIB FAT	RMP FT					
RATIO		103	99	102		110	107	98	132			
CONT.	3	3	2		2	2	2	2				
ADJ.	70	549	819		10.1	2.87	0.23	0.35				

At to WS 24023. NS to FMC 2808 & FMC 2112. ECD Aug 10-Nov 15.



PLUM CREEK LLC

ID: 4504 BBU# C1196238 DE-HORNED 8/10/2024
 COLOR: RED FALL BRED HEIFER

LL MR 3230 925 FRENZEL 3230
 LL MISS DOUBLE L 427
FMC LITTLE JOHN 1803
 F & M CATTLE 6521
 W FIVE 842
 *W FIVE 002
 *DOUBLE L 7008
 *LL MISS FIRE POWER 481
 LL MR DOUBLE L 716
PLUM C 2508
 PLUM C 9507
 FRENZEL 5605
 M & M CATTLE CO 1125

EXPECTED PROGENY DIFFERENCES						ULTRASOUND EPDS				INDEXES		
	CE	BW	WW	YW	MK	SC	REA	IMF	RIB FAT	\$T	\$M	\$FE
EPD	4.65	-0.6	34	48	8	0.81	0.41	-0.12	-0.02	96.31	20.28	15.56
%	25	20	30	30	75	25	30	85	85	30	40	45
PERF.	BW	WW	YW	REA	%IMF	RIB FAT	RMP FT					
RATIO		104	96	97		95	86	52	76			
CONT.	3	3	2		2	2	2	2				
ADJ.	68	461	764		8.13	0.31	0.07	0.19				

At to WS 24023. NS to FMC 2808 & FMC 2112. ECD Aug 10-Nov 15.



JE RANCH

ID: 155 BBU# C1199271 HORNED 9/12/2024
 COLOR: RED FALL BRED HEIFER

TINY 5801 FRENZEL 3112
 FRENZEL 3618
BLAU BRANDON 2013
 ML 1158
 *FOUNDATION BEEFMASTERS 4248
 *BLAU RANCH 523
 CF ADRENALINE 170
 H M S 2657/6
 HIGHLANDER 65-1
RRLORENA 801
 HALEPESKA 472
 TEXAS LPT 415/0
 HALEPESKA 985

EXPECTED PROGENY DIFFERENCES						ULTRASOUND EPDS				INDEXES		
	CE	BW	WW	YW	MK	SC	REA	IMF	RIB FAT	\$T	\$M	\$FE
EPD	4.51	0.2	21	27	8	0.42	0.15	0.06	-0.02	61.75	14.09	15.53
%	30	45	75	80	75	60	65	35	85	75	70	45
PERF.	BW	WW	YW	REA	%IMF	RIB FAT	RMP FT					
RATIO		103										
CONT.	1	2	1		1	1	1	1				
ADJ.		544	778		7.83	2.89	0.21	0.33				

At to WS 24023. NS to FMC 2808 & FMC 2112. ECD Aug 10-Nov 15.



F & M CATTLE CO.

ID: 4642 BBU# C1202162 POLLED 8/15/2024
 COLOR: RED FALL BRED HEIFER

FMC FAT TIRE 8525 *DOUBLE L 7008
 FRENZEL 987 M & M CATTLE CO 0718
MMOSS PARAMOUNT 110
 PINE SPRINGS 938
 SANDERS RANCH 502
 *PINE SPRINGS 601
 MILLER 632
 FRENZEL 3827
 FMC 2121
 FRENZEL 0219
 MILLER 673
 FRENZEL 7314

EXPECTED PROGENY DIFFERENCES						ULTRASOUND EPDS				INDEXES		
	CE	BW	WW	YW	MK	SC	REA	IMF	RIB FAT	\$T	\$M	\$FE
EPD	3.3	0.3	45	65	9	1.23	0.61	-0.15	-0.02	125.09	25.76	25.33
%	60	50	10	10	55	10	15	90	85	10	20	5
PERF.	BW	WW	YW	REA	%IMF	RIB FAT	RMP FT					
RATIO												
CONT.	1	1	1		1	1	1	1				
ADJ.		396	726		7.49	2.27	0.16	0.49				

At to WS 24023. NS to FMC 2808 & FMC 2112. ECD Aug 10-Nov 15.



HINES BEEFMASTERS

ID: 416 BBU# C1203176 DE-HORNED 8/12/2024
 COLOR: RED FALL BRED HEIFER

*DOUBLE L 7008 ** *L BAR 5502
 L BAR 4431
TANK 376
 *FIVE V TANKS MOMMA VINSON 934
 TOP GUN 924-2-4
 *SPEAR RANCHES 3036
LASATER 1506
 LASATER 7414
 FOUNDATION BEEFMASTERS 1072

EXPECTED PROGENY DIFFERENCES						ULTRASOUND EPDS				INDEXES		
	CE	BW	WW	YW	MK	SC	REA	IMF	RIB FAT	\$T	\$M	\$FE
EPD	1.03	1.5	36	59	12	0.73	0.67	-0.14	-0.01	115.57	18.2	18
%	>95	90	25	10	10	35	10	90	>95	15	50	30
PERF.	BW	WW	YW	REA	%IMF	RIB FAT	RMP FT					
RATIO		92	100	102		106	100	127	135			
CONT.	4	3	2		2	2	2	2				
ADJ.	80	540	882		10.4	2.37	0.31	0.58				

At to WS 24023. NS to FMC 2808 & FMC 2112. ECD Aug 10-Nov 15.



BALLARD MOUNTAIN FARM

ID: 410 BBU# C1195968 HORNED 8/25/2024
 COLOR: RED FALL BRED HEIFER

FRENZEL 3230

KING 9548
 FRENZEL 987

FRENZEL 8814

*FRENZEL 1128

*BROADWAY 807
 *FRENZEL 956
 TANK 376
 ENSOR 703

ENSOR TROUBLE 008

BALMTNFM 106

BMF'S BELLA 907

F & M CATTLE CO 6412
 F & M CATTLE 7703

	EXPECTED PROGENY DIFFERENCES					ULTRASOUND EPDS				INDEXES		
	CE	BW	WW	YW	MK	SC	REA	IMF	RIB FAT	\$T	\$M	\$FE
EPD	2.24	1.2	33	51	11	1.01	0.5	-0.04	-0.03	101.67	19.31	16.5
%	85	85	35	25	20	15	20	65	50	25	45	40
PERF.	BW	WW	YW	REA			%IMF	RIB FAT	RMP FT			
RATIO	100	98	97				98	82	98	76		
CONT.	2	2	2				2	2	2	2		
ADJ.	68	567	757				7.22	2.36	0.25	0.28		

At to WS 24023. NS to FMC 2808 & FMC 2112. ECD Aug 10-Nov 15.



J & L RANCH BEEFMASTERS

ID: A454 BBU# C1197151 POLLED 9/23/2024
 COLOR: RED FALL BRED HEIFER

TOTAL ADDICTION 1419

** WPR'S THE TOTAL PACKAGE 7595
 ** WPR'S MISS PRISS 0907

JLRB OLD TEXAS 926

DENO II K-139

*L BAR ESSENTIAL 7548
 DYN-O-MITE K-104
 WIDE BUTT 35
 MISS DH 776

CH 604

DH MISS 954

MISS DH 752

DH 555H
 BILL TRANUM 510

	EXPECTED PROGENY DIFFERENCES					ULTRASOUND EPDS				INDEXES		
	CE	BW	WW	YW	MK	SC	REA	IMF	RIB FAT	\$T	\$M	\$FE
EPD	5.16	-0.4	42	66	13	1.21	0.67	0.33	-0.01	132.77	27.04	29.57
%	20	25	10	5	3	10	10	3	>95	4	15	2
PERF.	BW	WW	YW	REA			%IMF	RIB FAT	RMP FT			
RATIO	104	101										
CONT.	10	2	1				1	1	1	1		
ADJ.	67	581	789				9.38	3.66	0.27	0.28		

At to WS 24023. NS to FMC 2808 & FMC 2112. ECD Aug 10-Nov 15.



ATF

ID: 446 BBU# C1193732 POLLED 9/16/2024
 COLOR: RED FALL BRED HEIFER

LL GAME CHANGER 664

*DOUBLE L 7008
 T.A. 313

LL MR GAME CHANGER 910

*LL MISS COLORADO 021

*FOUNDATION BEEFMASTERS 5222
 *MISS COLORADO 611
 ** WPR'S THE TOTAL PACKAGE 7595
 MISS CJ 860

VFF CROWN ROYAL 139C

VAUGHN FAMILY FARMS 402F

VFF AB MS 14307

AB MISTER LOGAN AB11404
 ELECTRIC EDITION AB08315

	EXPECTED PROGENY DIFFERENCES					ULTRASOUND EPDS				INDEXES		
	CE	BW	WW	YW	MK	SC	REA	IMF	RIB FAT	\$T	\$M	\$FE
EPD	1.21	1.6	33	50	9	0.58	0.7	-0.05	-0.02	99.22	16.14	8.59
%	95	90	35	25	55	45	10	65	85	30	60	90
PERF.	BW	WW	YW	REA			%IMF	RIB FAT	RMP FT			
RATIO												
CONT.	1	1	1				1	1	1	1		
ADJ.	71	533	746				9.5	2.73	0.26	0.43		

At to WS 24023. NS to FMC 2808 & FMC 2112. ECD Aug 10-Nov 15.



BALLARD MOUNTAIN FARM

ID: 407 BBU# C1190354 HORNED 8/10/2024
 COLOR: DARK RED FALL BRED HEIFER

TRADEMARK 5318

J & K 1001
 M & M CATTLE CO 0718

ML BENCHMARK 055

*ML324

*FRENZEL ROCKING F BAR 910-5
 ML 0955
 FRENZEL 2216
 EUBANK FAMILY FARMS 213/9

EFF TEXAS RANGER 711

VRHOLDEN MONEY MAKER 2262

RH 1462

DAVIS DOUBLE D RANCH 9451
 CIRCLE Y FARM 01

	EXPECTED PROGENY DIFFERENCES					ULTRASOUND EPDS				INDEXES		
	CE	BW	WW	YW	MK	SC	REA	IMF	RIB FAT	\$T	\$M	\$FE
EPD	4.18	0.3	38	59	11	0.69	0.59	0.01	-0.01	116.1	21.1	29.91
%	35	50	20	10	20	35	15	50	>95	15	35	2
PERF.	BW	WW	YW	REA			%IMF	RIB FAT	RMP FT			
RATIO	100	102	103				102	118	102	124		
CONT.	2	2	2				2	2	2	2		
ADJ.	68	591	804				7.47	3.41	0.26	0.46		

At to WS 24023. NS to FMC 2808 & FMC 2112. ECD Aug 10-Nov 15.



DANCING G'S FARM

ID: 84/159 BBU# C1198016 HORNED 8/28/2024
 COLOR: RED WHITE UL FALL BRED HEIFER

VFF 3008G

VFF CROWN ROYAL 139C
 VFF CELIA 215C

RR THE BULL WITH NO NAME 136

RR BUFFY 946

LL MR DOUBLE L 421
 HALEPESKA 450

LYSSY'S PINNACLE 92/465

** MAVERICK 17/557
 *OASIS II - CLONE 969

DG'S HOOF'R 96/9

LYSSY 93/690

NEW DESIGN 30/910
 JEWELLA 004

	EXPECTED PROGENY DIFFERENCES					ULTRASOUND EPDS				INDEXES		
	CE	BW	WW	YW	MK	SC	REA	IMF	RIB FAT	\$T	\$M	\$FE
EPD	4.33	-0.2	38	46	8	0.8	0.06	0.28	-0.02	97.5	28.51	11.92
%	35	30	20	35	75	30	75	5	85	30	10	70
PERF.	BW	WW	YW	REA			%IMF	RIB FAT	RMP FT			
RATIO		93	96				98	123	92	90		
CONT.	1	6	3				3	3	3	3		
ADJ.		505	715				8.25	4.73	0.33	0.46		

At to WS 24023. NS to FMC 2808 & FMC 2112. ECD Aug 10-Nov 15.



C & G CATTLE CO

ID: 421 BBU# C1197067 HORNED 9/14/2024
 COLOR: RED FALL BRED HEIFER

WPR'S 1798

** WPR'S THE TOTAL PACKAGE 7595
 ** WPR'S JUNK IN THE TRUNK 0726

FRENZEL 0919

FRENZEL 4606

J & K 1001
 FRENZEL 1246

WPR'S TOTAL WESTERN 6103

** WPR'S THE TOTAL PACKAGE 7595
 ** WPR'S JUNK IN THE TRUNK 0726

CG 924

DG'S SOUL CASH 46/6

C J'S MOTOWN 412
 CASH'S SHUFFLE 67/1

	EXPECTED PROGENY DIFFERENCES					ULTRASOUND EPDS				INDEXES		
	CE	BW	WW	YW	MK	SC	REA	IMF	RIB FAT	\$T	\$M	\$FE
EPD	1.89	0.8	33	52	8	0.5	0.29	-0.16	-0.04	101.71	14.06	18.39
%	90	70	35	20	75	50	45	95	15	25	70	30
PERF.	BW	WW	YW	REA			%IMF	RIB FAT	RMP FT			
RATIO												
CONT.	1	1	1				1	1	1	1		
ADJ.		467	739				7.78	2.04	0.14	0.2		

At to WS 24023. NS to FMC 2808 & FMC 2112. ECD Aug 10-Nov 15.



DANCING G'S FARM

ID: 94/164 BBU# C1198017 POLLED 9/16/2024
 COLOR: BLACK FALL BRED HEIFER

VFF 3008G

VFF CROWN ROYAL 139C
 VFF CELIA 215C

RR THE BULL WITH NO NAME 136

RR BUFFY 946

LL MR DOUBLE L 421
 HALEPESKA 450

CJ'S DREAM ON 21/12

CF DREAM CATCHER 914
 *CJ'S DIAMOND OF SOUL 509

SM RUMBA 6207

WR ROXIE'S RACHEL 57/12

** BLACK JACK 21
 WR ROXIE 23/9

	EXPECTED PROGENY DIFFERENCES					ULTRASOUND EPDS				INDEXES			
	CE	BW	WW	YW	MK	SC	REA	IMF	RIB FAT	\$T	\$M	\$FE	
EPD	3.43	-0.1	31	43	11	0.57	0.26	0.31	-0.03	91.5	21.67	18.79	
%	55	35	40	40	20	45	50	4	50	35	35	25	
PERF.	BW	WW	YW					REA	%IMF	RIB FAT	RMP FT		
RATIO	106	93					112	129	114	115			
CONT.	3	2	1				2	2	2	2			
ADJ.	93	511	803				8.05	6.39	0.25	0.43			

AI to WS 24023. NS to FMC 2808 & FMC 2112. ECD Aug 10-Nov 15.



LARRY LAIRMORE

ID: 498 BBU# C1195249 SCURRED 10/2/2024
 COLOR: MOT UL WHITE UL FALL BRED HEIFER

TANK 376

*DOUBLE L 7008
 *FIVE V TANKS MOMMA VINSON 934

LL MR GODZILLA 106

*BILL TRANUM 140

*FOUNDATION BEEFMASTERS 5222
 L BAR 7218

LL MR PD 501

*DOUBLE L 7008
 BUSTER 033

LL MISS PD 947

LL MISS FIRE POWER 647

FIRE POWER 265
 CAIN 081Y2

	EXPECTED PROGENY DIFFERENCES					ULTRASOUND EPDS				INDEXES			
	CE	BW	WW	YW	MK	SC	REA	IMF	RIB FAT	\$T	\$M	\$FE	
EPD	1.33	1.6	47	69	13	1.03	0.44	0.01	-0.01	133.38	29.11	30.8	
%	95	90	5	4	3	15	30	50	>95	4	10	1	
PERF.	BW	WW	YW					REA	%IMF	RIB FAT	RMP FT		
RATIO	102	111	98				90	112	103	112			
CONT.	5	4	2				2	2	2	2			
ADJ.	78	607	750				7.44	3.47	0.17	0.24			

AI to WS 24023. NS to FMC 2808 & FMC 2112. ECD Aug 10-Nov 15.



Reference Sires

Double L



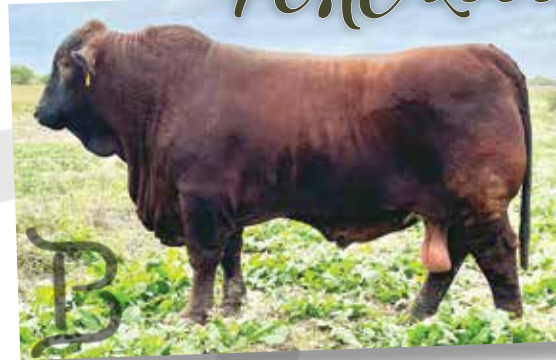
Double Two Step



FMC 2001



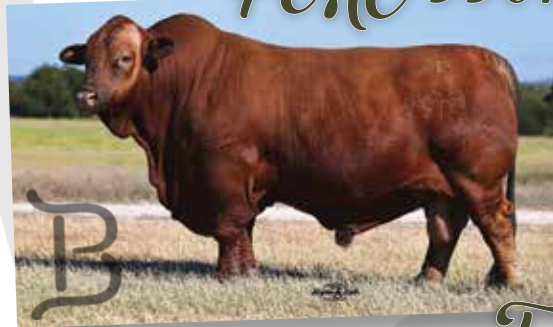
FMC 2333



FMC 8501



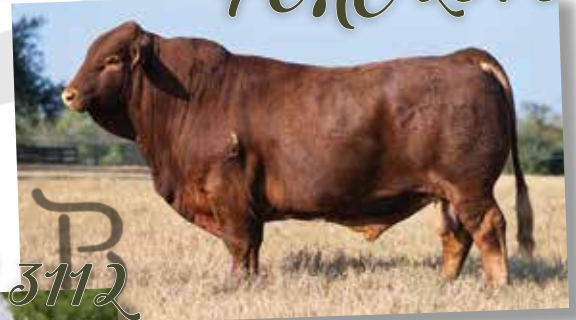
FMC 9901



FMC McClester



FMC 2573



Frenzel 3112



Reference Sires

Frenzel 8918



GLC Zydeco



Kid Rock



LL716



LRB 2204



LRB Ledger



Miller 632



ML716



ML914

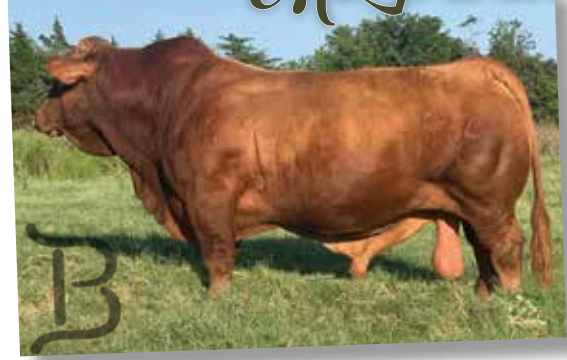


Reference Sires

ML Checkmark



ML Patriot



Paisano



Paramount



Redbone



Tank



Tranum 717

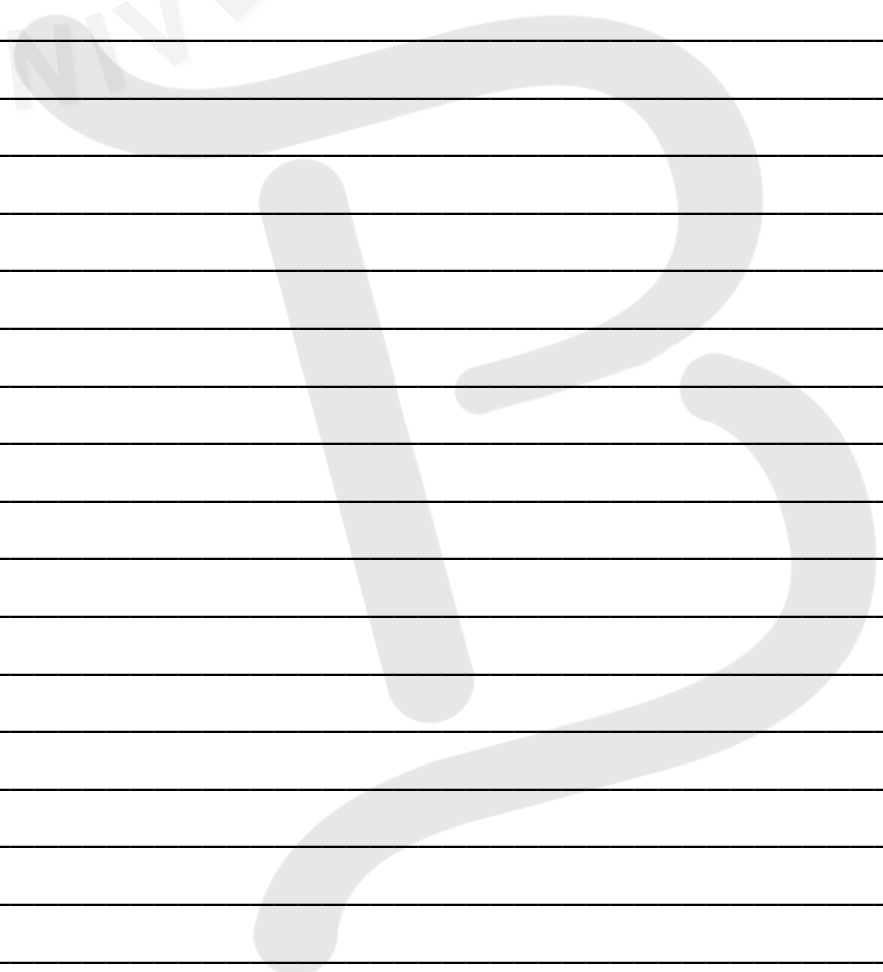
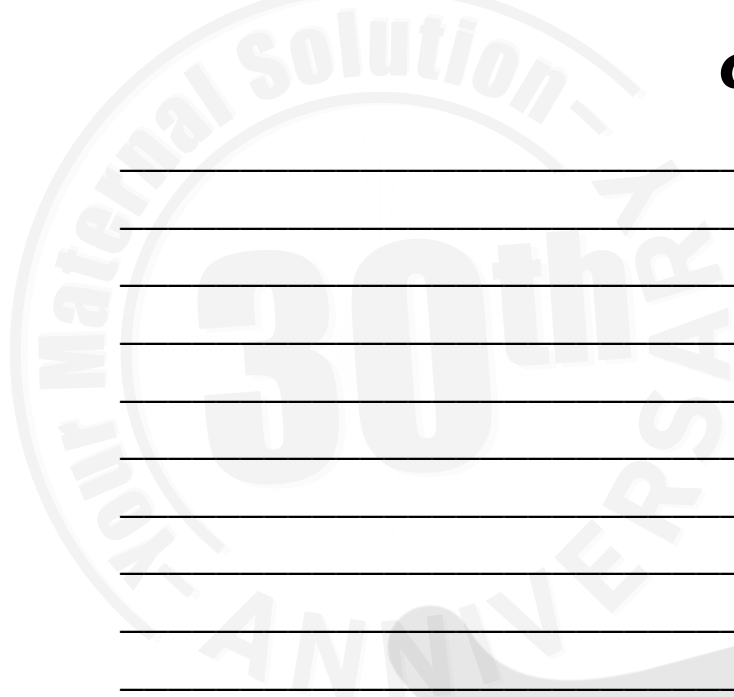


TERMS AND CONDITIONS OF SALE

1. **BIDDING:** Each animal will be sold to the highest bidder without reserve.
2. **BIDDING DISPUTE:** The Auctioneer in charge will settle any dispute as to bids, and his decision on such matters shall be final.
3. **TERMS:** Terms of the sale are cash due upon sale, unless prior credit arrangements for the sale have been agreed upon in writing between the Buyer and Seller, in which event, the terms of the written credit arrangement between the Buyer and Seller for the sale shall prevail.
4. **PURCHASER'S RISK:** Each animal becomes the risk of the purchaser as soon as the auctioneer declares it sold.
5. **CERTIFICATE OF BREEDING AND/OR TRANSFERS:** All required paperwork will be transferred to the buyer at the seller's expense, upon settlement.
6. **HEALTH:** All animals will have appropriate certificates of veterinary inspection for travel to the sale site and will to the best of the seller's knowledge be eligible for interstate shipment, however, buyers need to be aware of their individual resident state's requirements for shipment of cattle. Any and all testing will have been completed within thirty (30) days of the sale date.
7. **ANNOUNCEMENTS:** Any changes in information of any kind will be announced from the auction box and such announcements shall take precedence.
8. **BREEDING GUARANTEES:** All bulls are guaranteed to have passed a Bull Breeding Soundness Evaluation (BSE) and have been certified a satisfactory potential breeder by a licensed veterinarian within thirty (30) days prior to sale date. Completed BSE will be attached to health papers at the sale. The seller makes no guarantees with respect to the ability to freeze semen.
9. **RIGHTS AND OBLIGATIONS:** The above terms and conditions of sale shall constitute a contract between buyer and seller of each animal and shall be equally binding upon both. Each sale or resale of an animal constitutes a separate transaction. Neither BBU, the sale manager, nor any other person connected with the management of the sale assumes any liability, legal or otherwise, for any subsequent resale of an animal.
10. **REMEDIES:** If within one-hundred eighty (180) days from the date of sale, the bull has failed to pass a Breeding Soundness Evaluation (BSE) certified by a licensed veterinarian, buyer must send seller written notification of the failure of the test within one-hundred and eighty (180) days from the date of sale and include the BSE test results. Within sixty (60) days after seller's notification of the failed BSE test, buyer and seller shall identify a mutually agreeable licensed veterinarian or technician certified by a licensed veterinarian to perform another BSE on the bull at the buyer's expense. The results of the test shall be deemed final and conclusive of this matter and binding on buyer and seller. If, in the opinion of said veterinarian or technician, the bull is unable to pass a BSE and be confirmed a satisfactory potential breeder, he shall so certify in writing to the seller and the buyer which shall include the official form used by the Society of Theriogenology or the official BBU Breeding Soundness Evaluation form. In such event the buyer may return the bull to the farm of seller, provided the bull is in good condition and in compliance with the health requirements of the seller's state, for a refund of the full purchase price. The acceptance of the refund of the full purchase price shall in any case be deemed full satisfaction and settlement of the matter. The seller and buyer shall bear equally all reasonable and necessary transportation expenses that are incurred in returning the animal to seller.



Notes:



Smarter Insurance for Pasture, Rangeland & Forage

- ✂ Superior analysis
- 📊 Comprehensive risk visualization
- ⚙ Custom solutions that fit your operation
- ✓ Improved coverage without increasing cost



- Connect for a free policy review
- Discuss operational needs
- Assess risk
- Develop a superior plan

Deadline 12/1



Cattle Mortality Bulls, Donors, Whole Herd



Horse Mortality Ranch Horses, Studs, Mares



Semen Tank Coverage Shipments, Location Coverage

Working Dog Mortality Males, Breeding Females

Marcus Creasy
Adams & Creasy Insurance Agency, Inc.
NPN 7473442 | marcus@adams-creasy.com | (501) 206-2281 m



PO BOX 2023 | Temple, TX 76503

Presorted
First Class
US Postage
PAID
SlateGroup

**JOIN US AT OUR NEXT
BEEF ON FORAGE SALE:**

3RD SATURDAY IN MARCH

McALESTER, OKLAHOMA

100 BULLS, 40 REGISTERED FEMALES

3RD SATURDAY IN APRIL

BRENHAM TEXAS

75 REGISTERED FEMALES, HERD BULLS

3RD FRIDAY IN SEPTEMBER

ARCADIA, FLORIDA

125 BULLS

3RD SATURDAY IN OCTOBER

BRENHAM, TEXAS

125 BULLS, 40 REGISTERED FEMALES

View Sale Videos at:

WWW.BEEFMASTERBULLSALE.COM



Visit us at Beefmaster Bull Sale